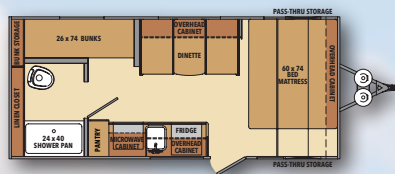


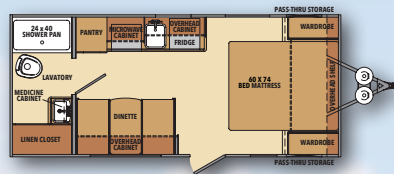
Shasta
EST. 1961



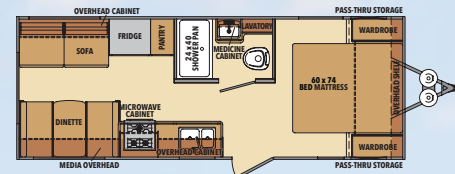
LIGHTWEIGHT TRAVEL TRAILERS — AFFORDABLE QUALITY... RICH HERITAGE



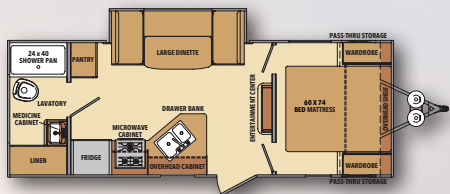
18BH



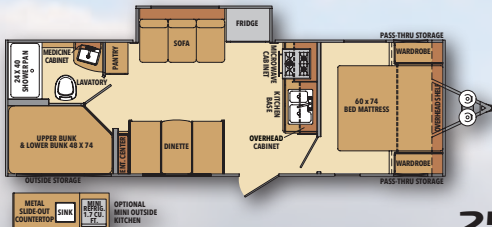
18FQ



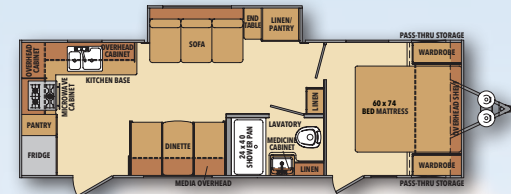
21CK



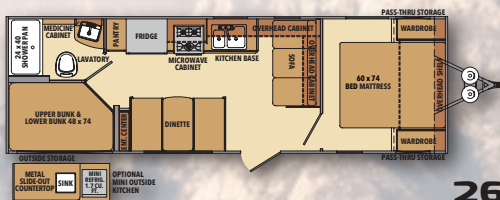
21RB



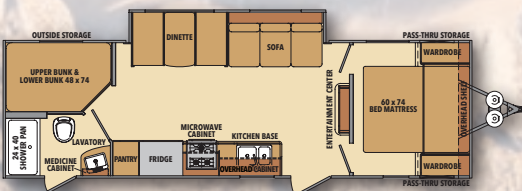
25RS



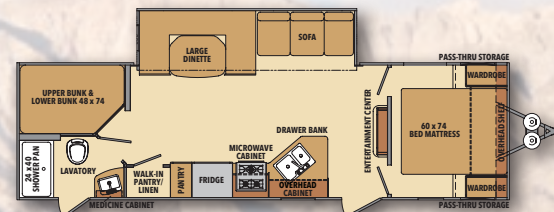
25RK



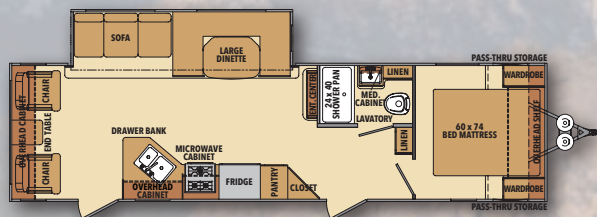
26BH



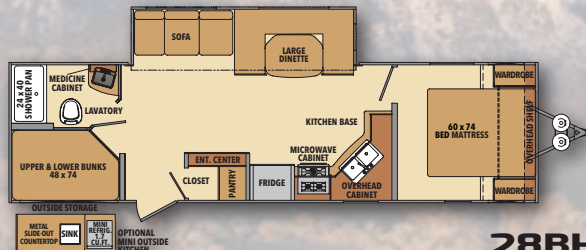
26DB



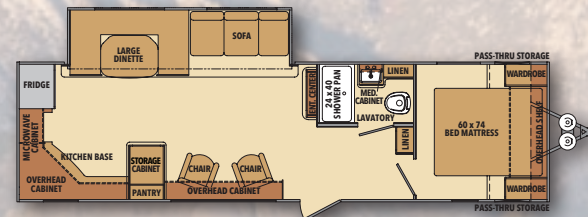
27BH



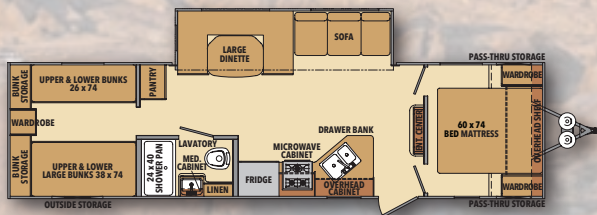
27RL



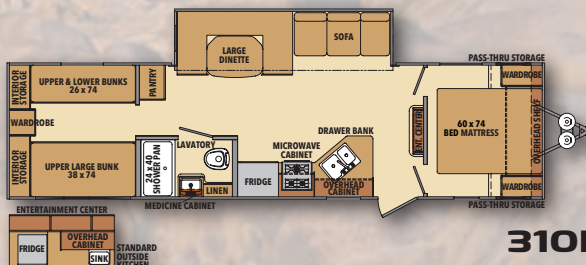
28BH



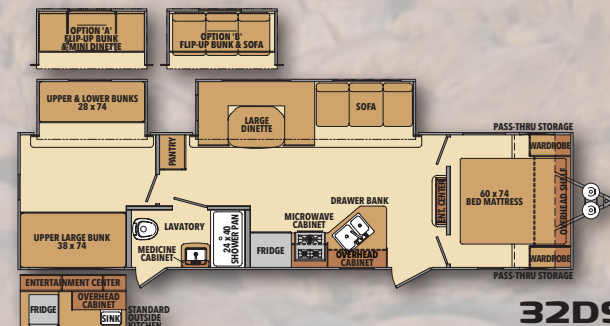
29RK



30QB



310K



32DS



STANDARDS

EXTERIOR

- Bumper with Drain Hose Carrier and End Caps
- Baggage doors
- Straight Axle with electric Brakes
- E-Z Lube Hubs
- Radial tires
- Radius Entry door with Screen
- Molded Rain Gutter with Extra Long spouts
- Black-Framed Radius Tinted Safety Glass Windows
- Front Diamond Plate Rock Guard
- Back-Up Camera Prep
- Solar Panel Prep
- Wi-Fi Prep

POWER SYSTEMS

- 12V Demand Water Pump
- Systems Monitor Panel
- Auto-Ignition Furnace with Wall Thermostat
- Water Heater Bypass
- Water System Winterization Kit
- 18K BTU or 25K BTU Furnace
- Gas/Electric/DSI Water Heater

INTERIOR

- LED Interior Lights
- Pocket-Bored and Screwed Cabinets
- Full Extension Ball Bearing Drawer Guides
- Mini Blinds in Bedroom
- Box Valances in Living Area
- Jack Knife Sofa
- Cable TV Hook-up in Living Area and in Bedroom
- RG6 Coaxial Cable
- USB Charging Station
- Armstrong Tile Flooring
- Under Bed Storage

KITCHEN

- Over-Sized and Deep Residential Sink
- High-Rise Kitchen Faucet with Pull-Out Sprayer
- Range Hood with Exhaust Fan and Light

BATHROOM

- Powered Roof Vent
- Marine Foot Flush Toilet
- Medicine Cabinet with Mirror
- Large Sink
- Shower with Surround

CONSTRUCTION

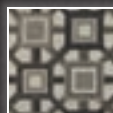
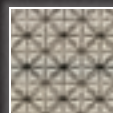
- .024/.030 Aluminum Exterior Skin
- R-7 Fiberglass Insulation in All Walls, Floor and Roof
- Radius Wood Rafters
- Aerodynamic Radius Front Profile
- 16" On-Center Wood Wall Studs
- Electric Slide Rooms
- Diflex II Roof Material
- 8' Exterior Width
- Cambered Steel I-Beam Frame

SAFETY FEATURES

- Co2 Detector
- LP Leak Detector
- Fire Extinguisher
- Smoke Alarm

DÉCOR FABRIC

- Gentle Dream
- Platinum



OPTIONS

INTERIOR

- Glass Cook-Top & Oven w/LED Lights
- Comforter Bedspread
- Hide-A-Bed Sofa IPO Jack-Knife Sofa
- Fireplace
- Junior Dinette IPO Lower Bunk (30QB, 32DS)

EXTERIOR

- Spare Tire
- (4) Stabilizer Jacks
- Power Tongue Jack
- Outside Shower
- Electric Stabilizing Jacks
- Aluminum Wheels
- RVQ Grill
- 30# LP Bottles IPO Standard 20# (N/A on 18' Models)
- 15K BTU A/C

- Sit-N-Sleep Sofa IPO Lower Bunk (32DS)
- Free Standing Table/4 Chairs (*Deep Slides Only)
- 8 cu ft Gas/Elec Refer (N/A on 18' Models)
- Recliners IPO Rockers (27RL, 29RK)
- Sink Cover

- 13.5K BTU Ducted AC (N/A on 18' Models)
- 2nd AC Prep (27BH, 28BH, 29RK, 27RL, 30QB, 31OK, 32DS)
- 15K BTU Ducted AC
- 2nd 13.5 BTU AC w/ 50 AMP Service (27BH, 28BH, 29RK, 27RL, 30QB, 31OK, 32DS)
- Heated/Enclosed Underbelly
- XL Grab Handle
- Mini Outside Kitchen (25RS, 26BH, 28BH)
- Solid Step (N/A on 18' Models)

STEP UP PACKAGE

- XL Grab Handle
- Glass cooktop/oven
- Comforter Bedspread
- Aluminum Wheels

- Solid Step
- Power Tongue Jack
- XL Grab Handle
- *Only available on Deep Slides

CAMPING WITH EASE PACKAGE

- 6 Gal Gas/Elec DSI HW Heater
- Stainless Steel Microwave Oven
- 13.5 BTU A/C
- 3-Burner Cook Top Stove
- Pleated Shades
- High-Rise Faucet w/Sprayer
- LED Interior Lights
- Decorative Back Splash
- Thermal-Foil Kitchen Countertops
- USB Charging System
- Zamp Solar Prep Package
- Power Awning w/LED light
- Marine Grade Outside Speakers
- AM/FM Blue-Tooth Stereo w/Speakers
- 10 cu ft Stainless Steel Residential Refer (3 cu ft on 18's)

- Double 20# LP Bottles w/ABS Cover (N/A on 18's)
- Under-Mounted Kitchen Sink (N/A on 18's)
- Wireless Rear Back-Up Camera Prep
- Front Colored Rock Guard
- Color Matching Entry and Baggage Doors
- Decorative Cabinet Pulls
- Shower & Surround
- Pre-Wired for Wi-Fi
- LED Light above Slide-Outs
- Coach Net
- Roadside Assistance





THE SHASTA STORY - *Creating memories since 1941*

In 1941, the first Shasta "house trailer" was built to be used as mobile military housing. Today, over 75 years later, Shasta remains an important player in the multi-billion-dollar RV industry. As one of the industry's longest producers of recreational vehicles, Shasta is proud of its longevity. We've earned our success in the best possible way – through experience... more experience than any other RV company in the world. Shasta's respected name prevails in today's fast-moving RV industry because of experience, combined with a strong, service-oriented dealer network, a loyal, repeat customer base, and our outstanding association with our parent company, Forest River.

TOWABLES DEFINITIONS

GVWR (Gross Vehicle Weight Rating) – is the maximum permissible weight of the unit when fully loaded. It includes all weights, inclusive of all fluids, cargo, optional equipment and accessories. For safety and product performance do NOT exceed the GVWR.

GAWR (Gross Axle Weight Rating) – is the maximum permissible weight, including cargo, fluids, optional equipment and accessories that can be safely supported by a combination of all axles.

UVW (Unloaded Vehicle Weight)* – is the typical weight of the unit as manufactured at the factory. It includes all weight at the unit's axle(s) and tongue or pin and LP Gas. The **UVW** does not include cargo, fresh potable water, additional optional equipment or dealer installed accessories. *Estimated Average based on standard build optional equipment.

CCC (Cargo Carrying Capacity)** – is the amount of weight available for fresh potable water, cargo, additional optional equipment and accessories. CCC is equal to GVWR minus UVW. Available CCC should accommodate fresh potable water (8.3 lbs per gallon). Before filling the fresh water tank, empty the black and gray tanks to provide for more cargo capacity. **Estimated average based on standard build optional equipment.

Each Forest River RV is weighed at the manufacturing facility prior to shipping. A label identifying the unloaded vehicle weight of the actual unit and the cargo carrying capacity is applied to every Forest River RV prior to leaving our facilities. The load capacity of your unit is designated by weight, not by volume, so you cannot necessarily use all available space when loading your unit.

FLOOR PLAN	18BH	18FQ	21CK	21RB	25RK	25RS	26BH	26DB	27BH	27RL	28BH	29RK	30QB	31OK	32DS
Length Overall	22' 5"	22' 5"	25' 7"	26' 4"	29' 7"	29' 8"	29' 8"	31'	32' 6"	34' 7"	33' 8"	33' 11"	35' 5"	35' 5"	35' 11"
Width	8'	8'	8'	8'	8'	8'	8'	8'	8'	8'	8'	8'	8'	8'	8'
Exterior Height w/ A/C	10' 6"	10' 6"	11'	11'	11'	11'	11'	11'	11' 2"	11' 2"	11' 2"	11' 2"	11' 2"	11' 2"	11' 5"
Main Slide Room Height	N/A	N/A	N/A	N/A	5' 9"	5' 9"	N/A	5' 9"	5' 9"	5' 9"	5' 9"	5' 9"	5' 9"	5' 9"	5' 9"
Dry Weight (lbs.)	3,210	3,235	3,890	4,520	5,080	4,890	4,405	TBD	TBD	6,365	TBD	TBD	6,090	6,165	6,920
Hitch Weight (lbs.)	350	325	570	460	605	690	480	TBD	TBD	660	TBD	TBD	780	700	700
Cargo Capacity	1,821	1,796	1,822	1,792	1,882	1,822	1,807	TBD	TBD	1,546	TBD	TBD	1,624	1,547	1,950
Fresh Water Tank Cap. (gal.)	42	42	42	42	42	42	42	42	42	42	42	42	42	42	42
Grey Water Tank Cap. (gal.)	36	36	36	36	72	72	36	36	36	72	72	72	36	36	36
Black Water Tank Cap. (gal.)	36	36	36	36	36	36	36	36	36	36	36	36	36	36	36
Awning	12'	12'	16'	16'	16'	12'	12'	20'	17'	20'	17'	17'	17'	17'	17'
Furnace (BTU's)	18K	18K	18K	18K	18K	18K	18K	18K	25K	25K	25K	25K	25K	25K	25K
Water Heater Capacity (gal.)	6	6	6	6	6	6	6	6	6	6	6	6	6	6	6
LP Gal.	4.5	4.5	9	9	9	9	9	9	9	9	9	9	9	9	9



PRE-DELIVERY INSPECTION FACILITY

20,000 square feet of quality assurance. The bare essentials for a premium product. This state-of-the-art facility gives immediate daily feedback to production for quality assurance in every unit built.

All information contained in this brochure is believed to be accurate at the time of publication. However, during the model year, it may be necessary to make revisions and Forest River, Inc., reserves the right to make all such changes without notice, including prices, colors, materials, equipment and specifications as well as the addition of new models and the discontinuance of models shown in this brochure. Therefore, please consult with your Forest River, Inc., dealer and confirm the existence of any materials, design or specifications that are material to your purchase decision. ©Copyright 2016 Shasta, a Division of Forest River Inc. - All Rights Reserved.



Forest River, Inc. encourages our customers to purchase their Forest River products from a local dealership whenever possible for the following reasons:

It is the goal of Forest River, Inc. that all of our RV owners fully enjoy the RV experience and that customer satisfaction meets or exceeds their expectations!

- 1) Forest River, Inc. dealers are independently owned and operated businesses so priority service and scheduling is at their discretion and is often provided to customers that purchased their unit at that dealership.
- 2) Purchasing locally allows customers to establish meaningful relationships with a dealer, enhancing the RV experience through assistance with product questions, user tips or RV regulations for your state or country, and much more!
- 3) Canadian customers must meet requirements to bring an RV purchased out of the country to their home. These requirements may involve additional inspections and certifications, taxes and fees. Your local Canadian Dealer is a professional at meeting these requirements.
- 4) Scheduling timely warranty repairs and adjustments through a local dealership provides far greater flexibility and convenience to you, the customer!



Learn More
Scan this barcode using a QR Reader on your smart phone to learn more about Forest River.



A Berkshire Hathaway company.

YOUR SHASTA DEALER:

